

2024 NJTOD Symposium

Cultivating Community, Commerce and Transit Oriented Development in New Jersey

Thursday, May 16, 2024
9:00 a.m. - 4:00 p.m.

Gov. James J. Florio
Special Events Forum
Edward J. Bloustein School
of Planning and Public Policy
Rutgers, The State University
of New Jersey



 **Thank you to all
our partners!**





The Alan M. Voorhees Transportation Center

The Alan M. Voorhees Transportation Center (VTC), established by the Rutgers University Board of Governors in 1998, is a national leader in the research and development of innovative transportation policy. Located within the Edward J. Bloustein School of Planning and Public Policy at Rutgers, the Center brings to bear the full array of resources of a major research university on transportation issues of regional and national significance, solving problems, sharing knowledge, and informing decisions. The Center accomplishes this by engaging with our research customers, policy makers, and civic leaders, conducting leading-edge research, delivering high-quality training and education programs, and providing insightful technical assistance on a range of critical transportation planning and policy topics. VTC pursues its mission with a strong commitment to equity, empathy, empowerment, and social justice.

<https://vtc.rutgers.edu/>

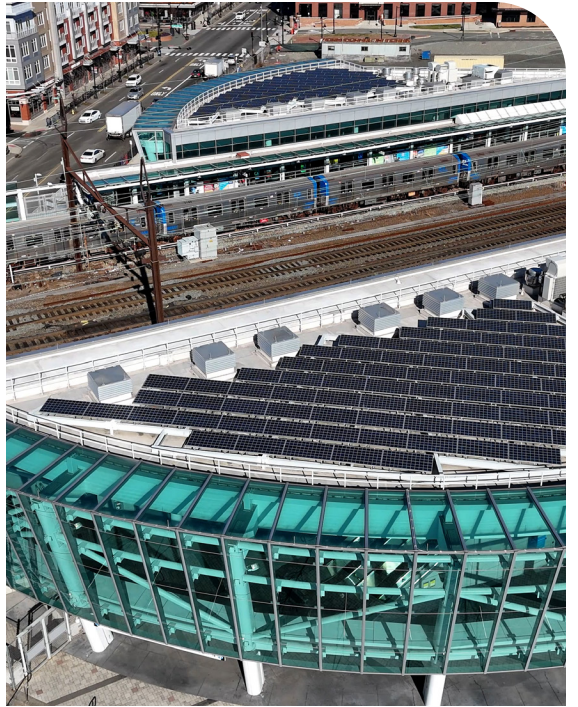




The Edward J. Bloustein School of Planning and Public Policy

Established and approved by the Rutgers University Board of Governors in 1992, the Edward J. Bloustein School of Planning and Public Policy serves as one of the nation's key centers for the theory and practice of planning and public policy scholarship and analysis. The Bloustein School fosters a highly-collaborative academic, scholarly and professional environment, preparing students to be the planning, policy and health leaders of tomorrow, conducting cutting-edge, policy-relevant research and scholarship, cultivating leadership in public engagement and community service, and addressing the crucial policy issues of our time.

<https://bloustein.rutgers.edu/>





9:00am - 9:30am

Registration and Networking

Coffee and light breakfast will be available. Guests are invited to peruse posters that highlight recent research and project work of the Alan M. Voorhees Transportation Center or visit the permanent installation of the Alan M. Voorhees exhibit on the fourth floor of the Civic Square building.

9:30am - 9:45am

Welcome

Remarks by Dr. Stuart Shapiro, Dean, Edward J. Bloustein School of Planning and Public Policy and Dr. Robert Noland, Associate Dean of the Faculty, Distinguished Professor of Transportation Planning and Policy and Director, Alan M. Voorhees Transportation Center.

9:45am - 12:00pm

Morning Keynote and Panel Discussion: NJ, PATH and Economic Development

Keynote: Clarelle DeGraffe, Director / General Manager, PATH

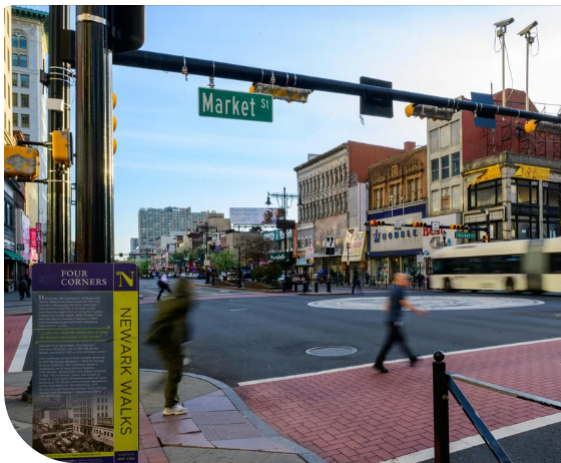
Since 1908, PATH and its predecessor, the H&M Railroad, has connected New York and New Jersey. Join PATH Director Clarelle DeGraffe in a discussion on how PATH has transformed North Jersey, from Jersey City to Newark, and now, Harrison, as a new community rises around the new Harrison PATH station.

- Duncan Kisia, Deputy Director & Chief Economist, Planning & Regional Development, The Port Authority of New York & New Jersey
- Susan Gruel, Principal, Heyer and Gruel, Planning Consultants, Town of Harrison
- Matt Ward, Supervising Planner, Division of City Planning, Jersey City

12:00pm - 1:15pm

Lunch and Networking

Lunch will be provided





1:15pm - 1:30pm

Afternoon Kickoff

Remarks by Jon Carnegie, Executive Director, Alan M. Voorhees Transportation Center.

1:30pm - 4:00pm

Afternoon Keynote and Panel Discussions: The Transit Village Initiative at 25

**Keynote: Megan Fackler, Director of Statewide Planning,
New Jersey Department of Transportation**

Beginning in 1999 with just five communities, the New Jersey Transit Village Initiative has flourished. Now the Initiative boasts 35 municipalities, all dedicated to revitalizing and redeveloping around their transit facilities in support of compact, mixed-use, transit friendly neighborhoods. Join us for a discussion highlighting the Initiative's successes and challenges, as it charts a course toward future opportunities in sustainable, transit friendly neighborhoods.

New Jersey's Transit Villages

Moderator: Stephanie DiPetrillo, Senior Researcher, VTC | NJTOD

- Sheena Collum, Village President/Mayor, Township of South Orange Village; Executive Director, APA-NJ
- Jason Delia, Council President, Borough of Metuchen
- Pallavi Shinde, Director of Planning, Department of Economic & Housing Development, City of Newark

Policy and Transit Friendly Planning

Moderator: Megan Massey, Assistant Director, Transit Friendly Planning, NJ TRANSIT

- Tom Dallassio, Vice President of Policy, New Jersey Chapter of the American Planning Association
- Christina Kata, State Programs, Regional Plan Association
- Chris Sturm, Policy Director, Land Use, NJ Future



The 2024 NJTOD Symposium is made possible by a collaboration among the Port Authority of New York & New Jersey, NJ TRANSIT, the New Jersey Department of Transportation, NJTOD, and the Alan M. Voorhees Transportation Center at Rutgers University.

NJTOD



The Transit Friendly Planning Newsletter

Published since 2005, NJTOD, the Transit Friendly Planning Newsletter, is designed to keep municipal officials, planners, and advocates up-to-date on the potential for development and redevelopment around transit stations. This partnership between NJ TRANSIT and the Bloustein School's Alan M. Voorhees Transportation Center at Rutgers University aims to enrich the transit-oriented development (TOD) conversation in New Jersey's diverse communities by highlighting what is happening in the state and around the country: best practices, model programs, legislation, and local problem-solving experiences.

Port Authority Trans-Hudson Corporation (PATH)



The Port Authority Trans-Hudson Corporation (PATH) was established in 1962 as a subsidiary of The Port Authority of New York and New Jersey. The heavy rail rapid-transit system serves as the primary transit link between Manhattan and neighboring New Jersey urban communities, as well as suburban commuter railroads. PATH operates 24 hours a day, 7 days a week, and is dedicated to continually supporting the anticipated growth in regional, residential, commercial, and business development.

Transit Friendly Planning Program



A community-focused planning program at NJ TRANSIT with decades of experience in assisting municipalities across New Jersey with community engagement, data, education, strategic partnerships, and technical assistance centered around station area planning. The Program strives to promote equitable, economically resilient, and environmentally sustainable development that improves the quality of life for all.

The Transit Friendly Planning Program offers several community resources and can provide technical assistance tailored to a community's needs.

The NJDOT Transit Village Initiative



The Transit Village Initiative (TVI), a multi-agency Smart Growth partnership led by the New Jersey Department of Transportation and NJ TRANSIT, creates incentives for municipalities to redevelop and revitalize areas around transit facilities using TOD planning practices and design standards.

About the Speakers



Jon A. Carnegie

Executive Director, Alan M. Voorhees Transportation Center

Jon A. Carnegie, AICP/PP, is Executive Director of the Alan M. Voorhees Transportation Center at Rutgers, The State University of New Jersey and an adjunct member of the faculty at the Edward J. Bloustein School of Planning and Public Policy at Rutgers. Mr. Carnegie has more than 30 years of experience in the fields of land use and transportation planning and policy at the municipal, county and regional level. He has been or currently serves as the principal investigator for a variety of research and planning projects involving a range of transportation policy topics. His experience includes managing research projects involving transit-oriented development; the relationship between land use and transportation; long-range vision planning; transportation capital finance; transportation equity; driver's licensing; workforce transportation options for low-income individuals and persons with disabilities; senior mobility; as well as transport security, emergency management and evacuation planning.



Sheena C. Collum

Village President/Mayor, Township of South Orange Village; Executive Director, New Jersey Chapter of the American Planning Association Chapter

The Honorable Sheena C. Collum serves as the 49th Mayor of South Orange Village and is the first female to hold this role in a municipality of 18,500 residents which is also the proud home to the Seton Hall University Pirates. She has concentrated her priorities around smart growth and economic development, infrastructure and capital planning, citizen engagement and volunteerism, and streamlining municipal operations through consolidations, shared services, and the expansion of technology.

Professionally, Sheena is the Executive Director of the American Planning Association - New Jersey Chapter, a statewide planning organization whose mission is to help build stronger communities and provide more choices for how people work and live while meeting the challenges of both growth and change. In her role, Sheena regularly works with local and state officials, professional and nonprofit organizations, and state and federal agencies on a range of public policy issues affecting New Jersey's municipalities, including smart growth, state, and regional planning, transportation, public health, sustainability, economic development, redevelopment, and affordable housing.

Sheena is a proud alumna of Seton Hall University, where she graduated summa cum laude with a Bachelor's Degree in Political Science and a Master's Degree in Public Administration with a concentration in public policy.



Thomas G. Dallessio AICP/PP/CPM/FRSA

Vice President of Policy, APA-NJ, Executive Director, Musconetcong Watershed Association, Lecturer, Bloustein School of Planning & Public Policy, Rutgers University

Tom is a licensed professional planner, policy expert, university lecturer and nonprofit executive with four decades of experience in the public, private, nonprofit and academic sectors. Tom serves as Vice President of Policy at the American Planning Association – New Jersey Chapter and was awarded the B. Budd Chavooshian Award for Outstanding Professional Planner. He’s the Executive Director of the Musconetcong Watershed Association, an independent nonprofit organization dedicated to protecting and improving the Musconetcong Watershed and its waters for people and nature. Tom’s also a Lecturer at the Edward J. Bloustein School of Planning & Public Policy at Rutgers University, where he teaches seminars and studios in Comprehensive Planning, Transportation and Land Use Administration. Previously, Tom led three other nonprofit organizations, founded the Center for Resilient Design and taught at the NJ Institute of Technology, and served as a Senior Policy Advisor to two Governors. He’s a Fellow of the American Institute of Certified Planners, Certified Public Manager and Fellow of the Royal Society for the Encouragement of the Arts, Manufactures and Commerce. He received his Bachelor of Arts from Rutgers College, Master of Arts from the Eagleton Institute of Politics and Master of City and Regional Planning from Rutgers University.





Clarelle DeGraffe

Director / General Manager, Port Authority Trans-Hudson (PATH)

Clarelle DeGraffe is Director/General Manager of the Port Authority Trans-Hudson (PATH) rail transit system. She leads the critical mission of providing safe, efficient, and timely travel for passengers who use PATH's 13 stations in New York and New Jersey each day.

A veteran of the Port Authority of New York and New Jersey for more than 30 years, Clarelle served as PATH deputy director before being appointed director in 2019. Previously, she was responsible for the development, funding, and delivery of the multi-million Sandy Recovery Capital Program and held project and program management roles in the World Trade Center (WTC) Construction and the Priority Capital Programs departments.

As PATH director, DeGraffe has guided efforts to rebuild rail tunnels and other facilities in response to Superstorm Sandy, implemented the railroad's signal modernization program, and oversees a multi-billion-dollar capital investment in to increase train capacity and reliability, rebuild rail stations, and enhance the customer experience overall.

Under her leadership, PATH was awarded the 2022 Outstanding Public Transportation System Achievement Award by the American Public Transportation Association (APTA), one of the industry's most prestigious honors.





Jason Delia

Council President, Borough of Metuchen

Jason Delia was sworn-in as a member of the Metuchen Borough Council in 2019 and re-elected for a second term in 2021. Since 2022 he has had the honor of being selected by his colleagues on the Council to serve as Borough Council President. Delia has been an ardent advocate for improving safety for pedestrians, cyclists, and micro mobility users achieving notable successes such as reducing speed limits on State and County roads to 25 mph and collaborating with Middlesex County on safety improvements for Main St. Delia's commitment extends beyond the borough, exemplified by his collaboration with the Vision Zero New Jersey Alliance to advocate for the NJ Safe Passing Law following a tragic incident in 2020. His efforts led to the bill's enactment in August 2021, addressing traffic and bicycle safety statewide.

Delia is a member of the Executive Board of the Metuchen Downtown Alliance which in 2023 was awarded the Great American Main Street Award. He played a pivotal role in supporting local businesses during the pandemic, ensuring Metuchen's downtown not only survived but thrived post-COVID.

In 2023, Middlesex County recognized Delia with the George Ververides Outstanding Community Leadership Award. The NJ Senate and General Assembly passed a joint resolution expressing gratitude for his dedication, describing him as a "tireless advocate for traffic and pedestrian safety" and proclaiming that "the people of New Jersey are genuinely indebted to public-spirited individuals, exemplified by Jason Delia, who dedicate their time and energies and utilize their unique talents to strengthen their communities."



Stephanie DiPetrillo

Senior Researcher, Alan M. Voorhees Transportation Center, Rutgers University

Stephanie DiPetrillo is Senior Researcher at the Alan M. Voorhees Transportation Center (VTC) and adjunct professor at the Bloustein School of Planning and Public Policy at Rutgers University. Her research focuses on the intersection of transportation and land use. Using mixed methods approaches, she examines ways to improve transit service quality and access for all users and investigates how to promote the use of public and community transportation through improvements in the built environment, transit-oriented development (TOD), and service design. This work has been undertaken for Federal Transit Administration, metropolitan planning organizations, state-level departments of transportation and human services, and transit agencies. In partnership with the Transit Friendly Planning (TFP) program at NJ TRANSIT, she leads NJTOD, an online resource that keeps planners, developers, officials, and the public up-to-date on how to create vibrant neighborhoods around transit facilities. She has taught at Hofstra University, Rutgers University, and the New Jersey Institute of Technology (NJIT). Stephanie holds a BA in Economics and a MCRP from Rutgers University and a M.Arch from NJIT.



Megan Fackler

Director of Statewide Planning, New Jersey Department of Transportation

A graduate of Iona College in New Rochelle, NY, Megan has over 13 years of experience in the government and community relations field in both the public and private sectors. Prior to joining the New Jersey Department of Transportation in 2019, she held prominent roles with the United States Senate, the New York State Legislature, and Time Warner Cable, focusing her efforts on developing relationships with elected officials at the local and state levels. Additionally, Megan served as the Community Relations & Engagement Manager at a federally designated non-profit organization utilizing various public engagement strategies to educate residents and government officials in the New York City/Hudson Valley region about the health-related cause. At the New Jersey Department of Transportation, Megan served as the Director of Government & Community Relations, where she developed and executed the Department’s public engagement strategy statewide. Currently, she serves as the Director of Statewide Planning focusing on policy formulation, performance measure setting, and long and short-range planning, while ensuring administrative priorities such as safety, environmental justice, and climate change are incorporated into the project initiation and advancement processes.



Susan S. Gruel, P.P.

Heyer and Gruel, Planning Consultants, Town of Harrison

Susan Gruel is a licensed professional planner and partner in the planning consulting firm of Heyer, Gruel & Associates. The firm has received numerous planning awards both nationally and statewide. Ms. Gruel’s planning work has included a broad spectrum of planning projects from affordable housing to regional strategic plans. She has been involved in community planning for over 35 years. Her passion and principal focus has been redevelopment, authoring numerous studies and plans including the Town of Harrison Waterfront Redevelopment Plan.

An instructor at the Bloustein School of Planning and Public Policy at Rutgers University for over 15 years, Susan’s contribution was recognized with the Rose Excellence in Teaching Award where she taught Comprehensive Planning with her partner Fred Heyer.



Christina Kata

New Jersey Policy Associate, Regional Plan Association

Christina Kata is RPA’s New Jersey Policy Associate. She assists with campaigns, fundraising, and outreach in the Garden State. Christina was born and raised in New Jersey and graduated from Brown University in 2014 as magna cum laude with a B.A. with Honors in Middle East Studies and a B.A. in Health & Human Biology. She has a Certificate in Public Policy from the Edward J. Bloustein School of Planning and Public Policy at Rutgers University. Christina also serves as a member of the Montclair Housing Commission.



Duncan Kisia

Deputy Director & Chief Economist, Planning & Regional Development
The Port Authority of New York & New Jersey

Duncan Kisia is the Deputy Director of Planning and Regional Development and Chief Economist at The Port Authority of New York & New Jersey. Mr. Kisia is responsible for guiding the agency’s economic research agenda that informs investment and policy decisions. His primary areas of focus include; travel demand modeling and activity forecasting, socioeconomic and demographic analysis, market research, risk analysis, economic impact assessments, and cost benefit analysis.

Before joining the Port Authority, Duncan managed the Economics & Planning Department at Louis Berger U.S. (now WSP), where he led several consulting engagements for both public and private sector clients. He previously also held highway and bridge design positions in the Civil Engineering and Highway Department of DMJM+Harris (now AECOM) in Philadelphia.

Mr. Kisia received his Master’s in Public Policy from the University of Chicago, and also holds Bachelor of Civil Engineering from Drexel University.



Megan Massey

Assistant Director, Transit Friendly Planning, NJ TRANSIT

Megan Massey is the Assistant Director of Transit Friendly Planning at NJ TRANSIT. The Transit Friendly Program was established in 1999 and has been committed to providing planning assistance to communities interested in planning for transit supportive land use and transit-oriented development at and surrounding NJ TRANSIT passenger facilities. Prior to joining NJ TRANSIT in 2018, Megan worked for Hudson County as a Transportation Planner. In her work at the County, she managed corridor studies, the update to the Open Space Trust Fund, as well as several NJTPA funded planning efforts. Megan was recently appointed to the Planning Board in Red Bank and serves as a board member on the Environmental Commission. Megan has a Master of City and Regional Planning from the Edward J. Bloustein School of Planning and Public Policy at Rutgers University.



Dr. Robert Noland

Associate Dean of the Faculty, Distinguished Professor of Transportation Planning and Policy and Director, Alan M. Voorhees Transportation Center

Robert B. Noland is Associate Dean of Faculty and Distinguished Professor at the Edward J. Bloustein School of Planning and Public Policy. He also serves as the Director of the Alan M. Voorhees Transportation Center. He received his PhD at the University of Pennsylvania in Energy Management and Environmental Policy. Prior to joining Rutgers University he was Reader in Transport and Environmental Policy at Imperial College London, a Policy Analyst at the US Environmental Protection Agency and also conducted post-doctoral research in the Economics Department at the University of California at Irvine. Dr. Noland is the former co-Editor-in-Chief of Transportation Research part D (Transport and Environment) and Associate Editor of the International Journal of Sustainable Transportation and was formerly the Chair of the Transportation Research Board Special Task Force on Climate Change and Energy.



Dr. Stuart Shapiro

Dean, Edward J. Bloustein School of Planning and Public Policy

Stuart Shapiro was appointed Dean of Edward J. Bloustein School of Planning and Public Policy in April 2023. He joined Rutgers University in 2003. Prior to that, he received a PhD in Public Policy from Harvard University – Kennedy School of Government and worked at the Office of Management and Budget under Presidents Clinton and George W. Bush. Dr. Shapiro teaches classes in economics, public policy, and politics. He has written four books and published numerous articles in law reviews, political science journals, public administration journals, and several others. He writes op-eds for The Hill and occasionally other news sites and has been quoted in the popular press extensively.



Pallavi Shinde

Director of Planning, Department of Economic & Housing Development, City of Newark

Pallavi Shinde serves as the Director of Planning and Zoning for the City of Newark, NJ. With over 20 years of planning experience, Pallavi is responsible for developing policies that shape the future of the City and guide development decisions for one of the largest cities in New Jersey. In her role, she oversees all boards and commissions, reviews development applications, and advises on revitalization of large parcels that have been under-utilized for decades, especially around transit. She has successfully managed to update the city’s zoning ordinance to promote vibrant commercial corridors, walkable neighborhoods and diverse uses that support communities. She is focused on inclusive, equitable, resilient and sustainable planning practices that are context sensitive and grounded in community engagement. Her multi-disciplinary education and experience in planning, architecture, transportation, urban design and landscape architecture has helped to transform several vacant and abandoned properties into housing opportunities and community assets.



Chris Sturm

Policy Director, Land Use, NJ Future

As New Jersey Future’s Policy Director for Land Use, Chris leads the team working to ensure every New Jerseyan can find a stable home in a community that is resilient, well-connected, healthy, and prosperous. Previously, she spearheaded NJF’s efforts to transform water infrastructure, working with colleagues to launch successful collaborations including Jersey Water Works, Lead-Free NJ, Sewage-Free Streets and Rivers, and the Clean Water, Healthy Families, and Good Jobs campaign. Chris has achieved lasting change in state laws, rules, and spending through policy development and advocacy, informed and strengthened by many partners, including those directly impacted. Her career experience includes serving as the assistant director of the Capital City Redevelopment Corporation. She holds a bachelor’s degree from the University of Michigan and a master’s degree in Public Affairs from the Princeton School of Public and International Affairs, where she concentrated in Urban and Regional Planning.



Matt Ward

Supervising Planner, Division of City Planning, Jersey City

Matt Ward is the Supervising Planner for the City of Jersey City, Division of City Planning. He has over a decade of experience working as an Urban Planner. His specialties include drafting development regulations, urban design, site plan review, land use planning, and policy analysis. Matt has benefited from his experience in the public, non-profit, and private sectors. Prior to working for the City of Jersey City, Matt worked for Garden State Episcopal Community Development Corporation and for Heyer, Gruel, and Associates. Matt is a graduate of UC Berkeley with a bachelor’s in film studies and a graduate of Rutgers University Bloustein School of Planning and Public Policy with a master’s degree in city and regional planning. He is a licensed professional planner (PP) in New Jersey, a member of the APA, and certified as a American Institute of Certified Planner (AICP). When not working, you will find Matt playing with his two kids, hiking or biking with his wife, or walking his dog who is nicknamed “Pizza.”

**Visit our website to
learn more!**

<https://vtc.rutgers.edu/>

